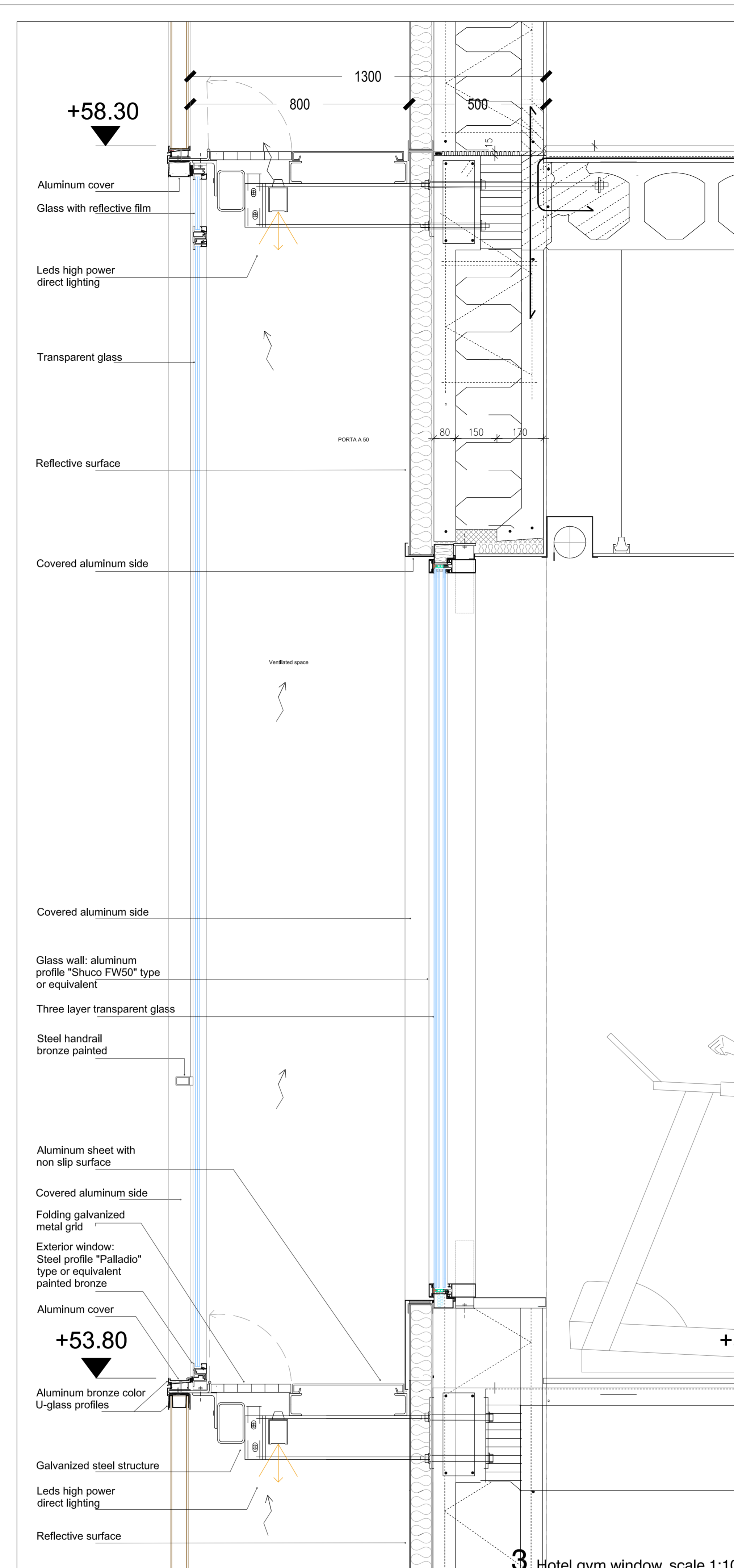


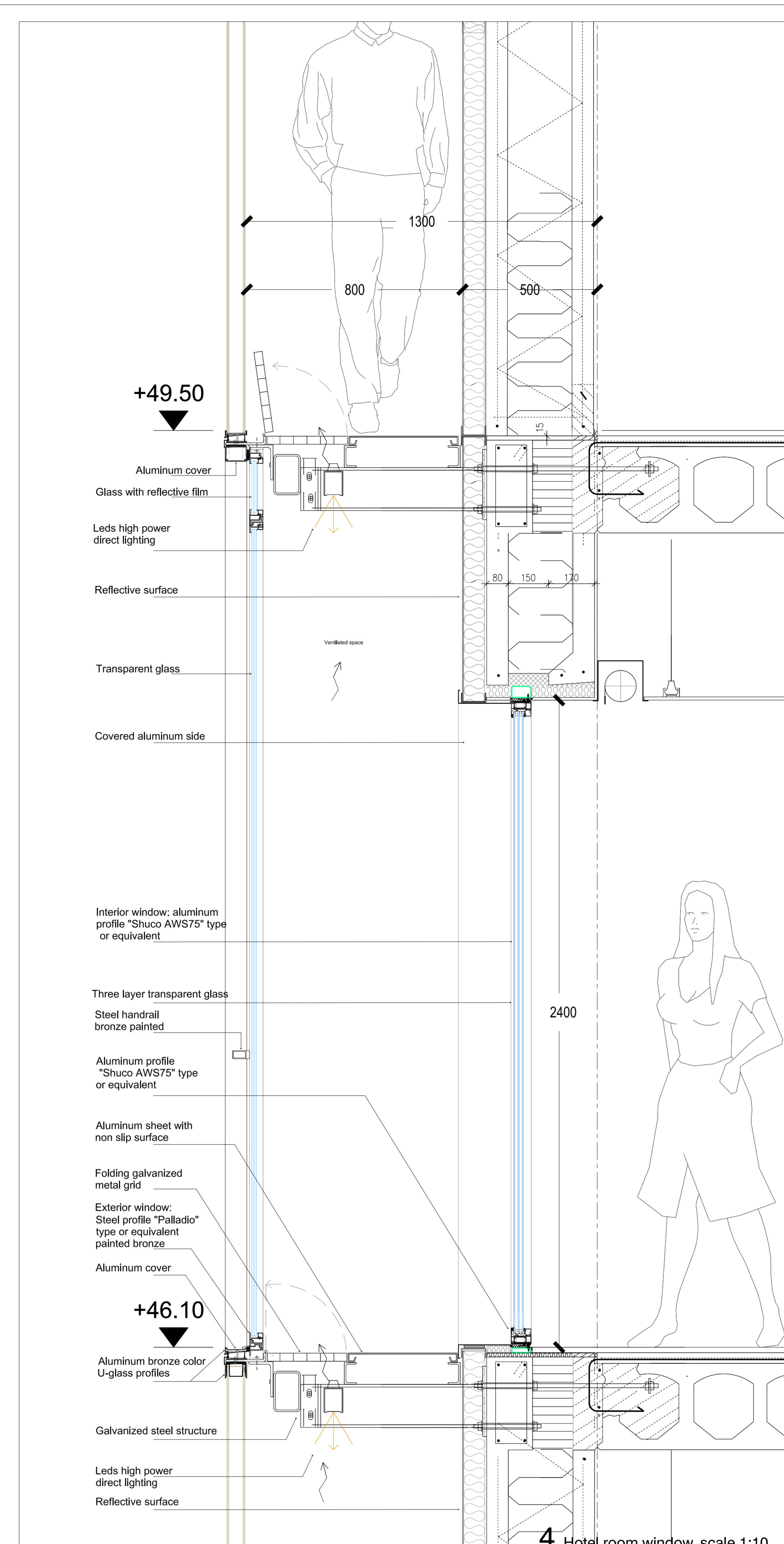
1 Section of the facade scale 1:50



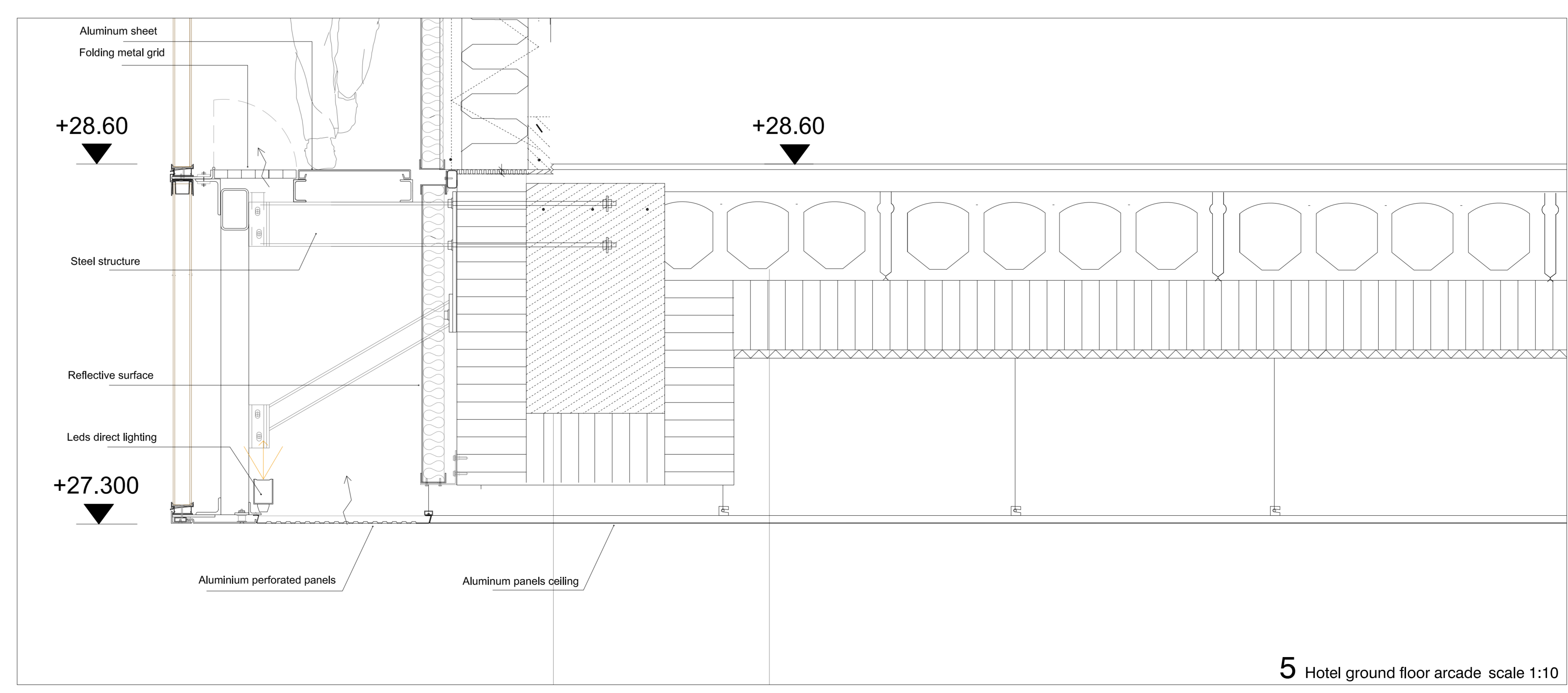
2 East elevation detail scale 1:50



3 Hotel gym window scale 1:10



4 Hotel room window scale 1:10



5 Hotel ground floor arcade scale 1:10

NOTES:
 THESE DRAWINGS ARE FOR INDICATION PURPOSE ONLY IN REGARDS TO THE DRAWINGS FOR TENDER. THESE DRAWINGS ARE NOT FOR CONSTRUCTION.

THESE DRAWINGS SHOULD BE READ IN CONJUNCTION WITH Wise Group Finland Oy, STRUCTURAL BUILDING SERVICES AND FAÇADE ENGINEERING TECHNICAL SPECIFICATION DOCUMENTS AND DRAWINGS REGARDING THE BUILDING ENVELOPE.

PLANNING ACTIVITIES LIKE FOR EXAMPLE CONSTRUCTION DETAILS, STATIC CALCULATIONS AND ALL OTHER TECHNICAL ISSUES ARE EXCLUDED FROM Cappa+Staubler architects & Maurizio Trovatielli (Resp. Elke Staubler) SCOPE OF WORK AND LIABILITY.

THESE DRAWINGS HAVE TO BE CHECKED BY Wise Group Finland Oy AND THE CONTRACTOR, WHETHER IT COMPLES WITH THE REQUIREMENTS OF THE PROJECT AND THE REQUIREMENTS OF THE RELEVANT CONSTRUCTION LAW.

THE WORK MUST BE CARRIED OUT IN ACCORDANCE WITH THE SPECIFICATIONS LISTED IN OUR DOCUMENTATION AND IN ACCORDANCE WITH GOOD TECHNICAL CONSTRUCTION.

ALL DIMENSIONS AND CORNERS MUST BE VERIFIED BY THE MANUFACTURER, WHO ASSUMES FULL RESPONSIBILITY. THE CREATION OF THE ELEMENTS OF JOINING MUST BE PERFORMED IN ACCORDANCE WITH THE RULES IN FORCE OF CONCEPTS OF LOGIC, ASSEMBLY, CALCULATION AND STATIC FINAL.

THESE DRAWINGS CONTAIN INFORMATION ONLY IN PRINCIPLE WHOSE VALIDITY WILL BE VERIFIED BY Wise Group Finland Oy AND THE CONTRACTOR OF THE PROJECT ON THE BASIS OF SPECIFIC TERMS OF SIZE, WEATHER, THE GEOGRAPHICAL AREA, ETC.

STRUCTURAL SPECIFICATIONS OF THE BUILDING ENVELOPE PROPOSAL AS WELL AS TECHNICAL SPECIFICATIONS OF THE SELECTED GLAZING WERE NOT MADE AVAILABLE TO Cappa+Staubler architects & Maurizio Trovatielli (Resp. Elke Staubler) AT THE TIME OF THIS DOCUMENT ISSUE.

ALL THE MANUFACTURING DRAWINGS, SAMPLE MATERIALS, COLOURS CONCERNING THE FAÇADE HAVE TO BE APPROVED BY Cappa+Staubler architects & Maurizio Trovatielli (Resp. Elke Staubler).

ALL HARDWARE (HINGE, HANDLE) AND GLASS TYPE HAVE TO BE APPROVED BY Cappa+Staubler architects & Maurizio Trovatielli (Resp. Elke Staubler).

ALL FIXING HAVE TO BE HIDDEN. THE GAP BETWEEN GLAZING AND DOORS HAVE TO BE MAX. 45MM WIDTH.

ARCHITECTS
 Cappa+Staubler architects
 & Maurizio Trovatielli

Wörzweg 2
 041070000
 Tel. +49 753 2018 4070
 041070000
 039 208 202004
 www.cappastaubler.com

PROJECT
 Luxury outlet,
 Casino and Hotel
 in Vaalimaa

Hotel - Elevation and
 Section, Detail

SCALE	
1:500/1:250/1:10	
DATE	14.03.2014
HIDDEN	
UPDATING	
21-03-14	
04-04-14	Checked notes
04-04-14	Revision after the meeting in Helsinki